

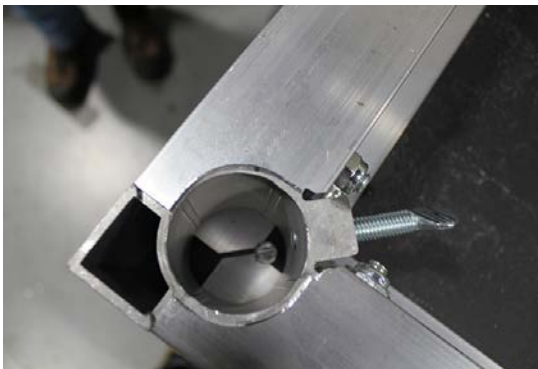


## INSTRUCTIONS TO REPLACE DECK SURFACES



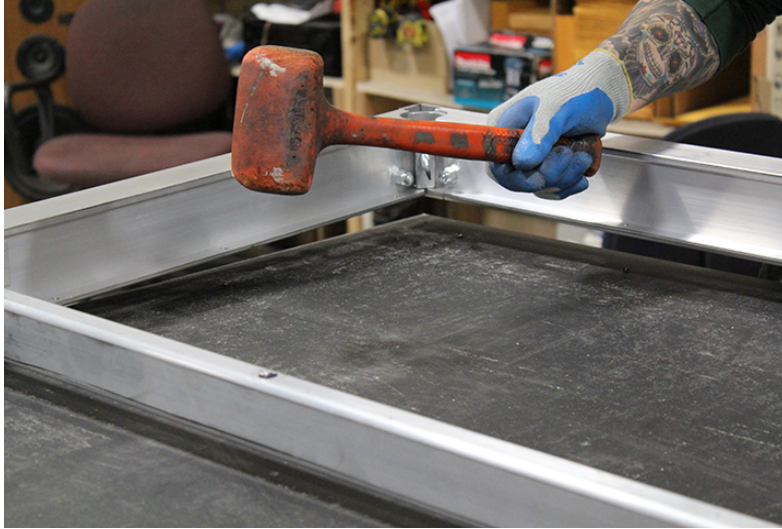
1. Lay deck upside down on the floor.

Please call 866-591-3471 with questions or issues.



2. Remove deck screws from edge of aluminum frame, down the length of the center brace and in the corners.

Please call 866-591-3471 with questions or issues.



**3. Pop the surface out of the aluminum frame – you may need to use a rubber mallet.  
Lay new surface face down.**

**Please call 866-591-3471 with questions or issues.**





**4. Place frame over new surface & use rubber mallet to bang frame securely in place on new surface.**

**Please call 866-591-3471 with questions or issues.**



5. Install NEW deck screws.

Please call 866-591-3471 with questions or issues.