

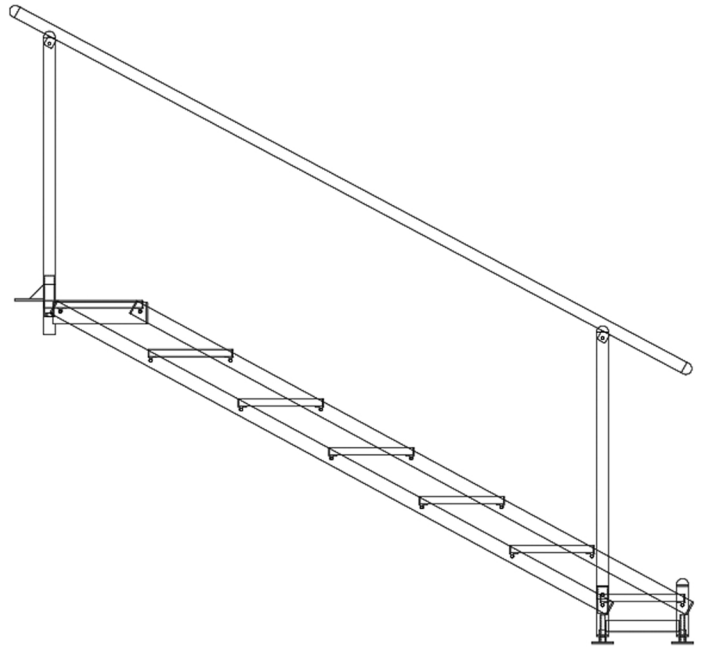
Construction

Features:

- Steel & Aluminum Construction
- 11 3/4" Deep x 36" Wide Non-Skid Quad Stair Treads
- Folds Flat For Easy Storage
- Meets 150 lbs. Side Impact Load
- Base Has 2 3/4" Diameter Rubber Dipped Fine Leveling Foot Providing 3" Of Fine Adjustment
- Requires No Tools For Installation
- Jaw-Type Clamp Device Attaches To A Variety Of Stages
- Crank Handle For Easy Height Adjustment
- Handrails Available Straight, Curved or ADA Compliant
- Standard Black Powder-Coating, Other Colors Available
- Installs With Or Without Handrail
- Stair Plugs Required When Installing Without Handrail
- Custom Designs Available
- **NEVER USE STAIRS WITHOUT CLAMP DEVICE**

Sizes & Weights:

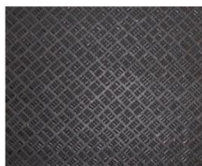
- | | | |
|-----------------------------------|-----------|----------|
| • 12"- 24" Adjustable Stair Unit | (3 Step) | 125 lbs. |
| • 16"- 32" Adjustable Stair Unit | (4 Step) | 137 lbs. |
| • 24"- 40" Adjustable Stair Unit | (5 Step) | 178 lbs. |
| • 36"- 56" Adjustable Stair Unit | (7 Step) | 230 lbs. |
| • 48"- 78" Adjustable Stair Unit | (9 Step) | 270 lbs. |
| • 78"- 108" Adjustable Stair Unit | (13 Step) | 375 lbs. |



7 Step Adjustable Stair Unit



9 Step Adjustable Stair Unit
w/ ADA Compliant Handrails



Tread Surface
Non Skid Quad



Stair Base With
Leveling Foot Pads



Stair Attached To Stage With
Clamp And All Thread Handle



Rise Adjustment Handle



Close Up Of Rise
Adjustment Handle