

Construction

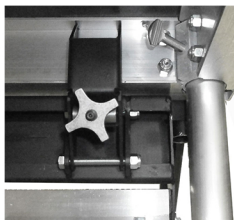
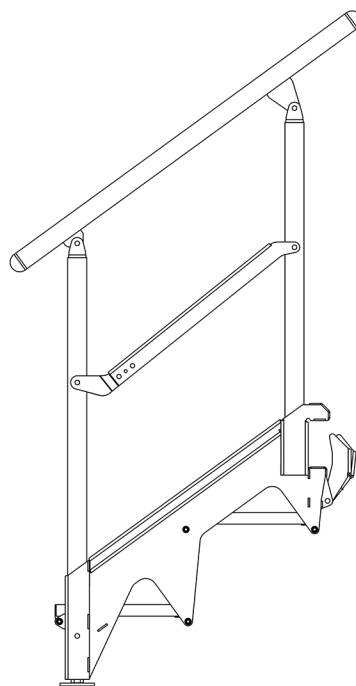
Features:

- Steel & Aluminum Construction
- 11 3/4" Deep x 42" Wide Non-Skid Quad Stair Treads with rise not to exceed 7"
- Overall Width of Stair Unit is 44"
- Meets 150 lbs. Side Impact Load
- Base has 3" Diameter Leveling Feet w/ 3" of Fine Adjustment
- Requires No Tools for Installation
- Jaw-Type Clamp Device Attaches to a Variety of Stages
- Handrails Available Straight or Curved
- Standard Black Powder-Coating
- Installs With or Without Handrail
- Custom Designs Available

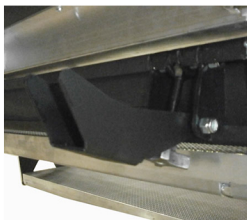
NEVER USE STAIRS WITHOUT CLAMP DEVICE

SIZE:

- 2 Step Stair Unit – used for 24" high stage



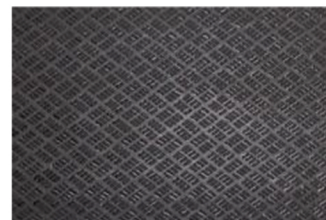
Swing Type Clamp Device



Swing Type Clamp Device



Base With Leveling Feet



Tread Surface Non-Skid Quad