

Construction

Features:

- Laminated laser cut high tensile grade 80 steel
- Clamps machined from 6061-T6 aluminum with positive conical locks & comfort knobs
- Universal design

Rigging:

- Three top and one bottom rigging points for attaching truss to a shackle, motor or chain hook.
- One ton of truss load in the saddles, plus an additional one ton load thru the lower rigging point.

Weight:

- 8 lbs.

Shipping Weight:

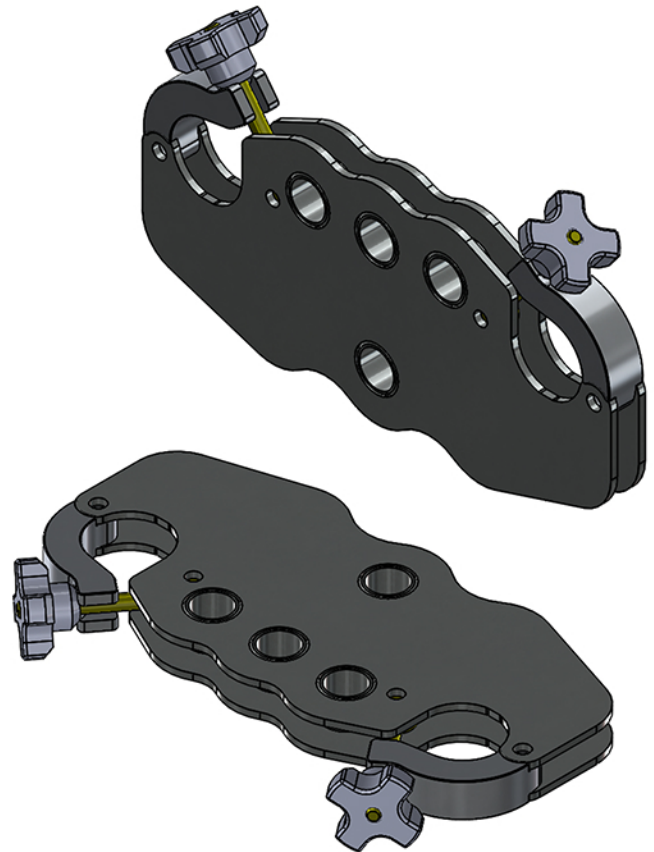
- 9 lbs.

Dimensions:

- 1" thick x 6.02" (Height) x 13.66" (Width)

Safe Vertical Working Load:

- 1 ton truss / 2 ton total



12" Truss Pick Closed



12" Truss Pick Open