

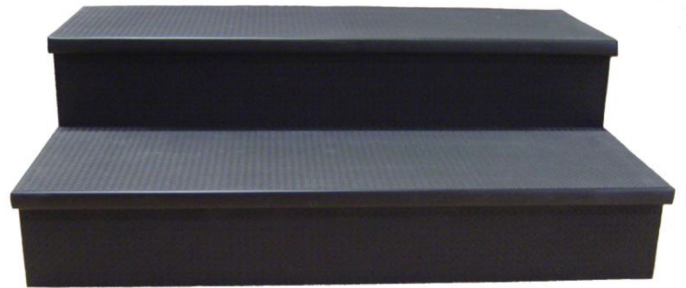
Construction

FEATURES:

- Marine Grade Plywood
- Non Skid, Carpet or Painted Black Surface
- Custom Designs & Colors Available
- 12" Deep x 36" Wide Treads
- Rise Not To Exceed 7" High
- No Assembly Required
- Free Standing Units
- Easy Access to Solid Faced Staging

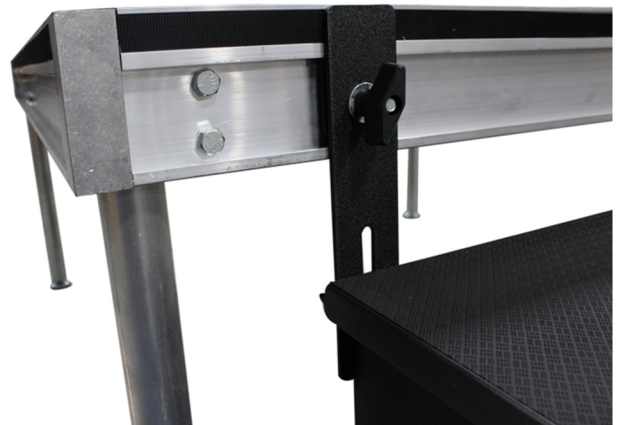
SIZES / WEIGHTS:

- | | |
|--|----------------|
| 1 Step Stair Box – 16" high stage | 25 lbs. |
| 2 Step Stair Box – 24" high stage | 50 lbs. |
| 3 Step Stair Box – 32" high stage | 75 lbs. |



2 Step Stair Box - Non Skid Surface

2 Step Stair Box - Non Skid Surface
Attached to Stage Deck



Stair Box attached to Stage Deck

Standard Surface Options:



Non Skid Quad

Black Carpet

Pepper Grey Carpet