

## Construction

### Features:

- Laminated laser cut high tensile grade 80 steel
- Clamps machined from 6061-T6 aluminum with positive conical locks & comfort knobs
- Universal design

### Rigging:

- Seven top and five bottom rigging points for attaching truss to a shackle, motor or chain hook
- One ton of truss load in the saddles, plus an additional one ton load thru the lower rigging point

### Weight:

- 13 lbs.

### Shipping Weight:

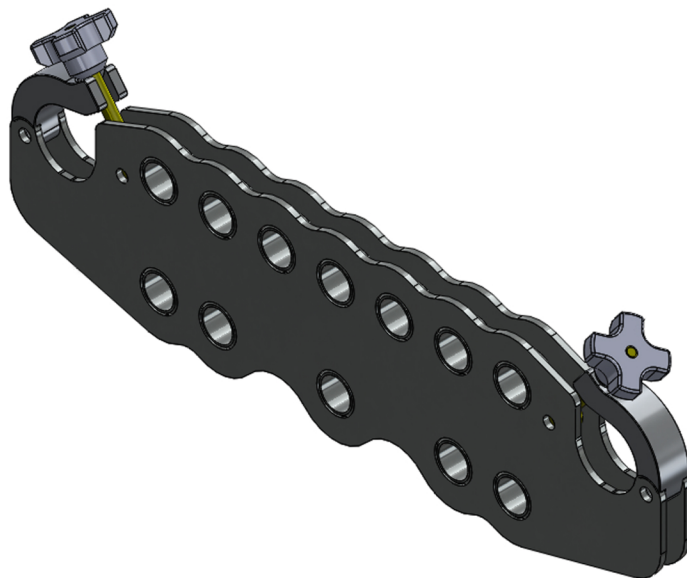
- 14 lbs.

### Dimensions:

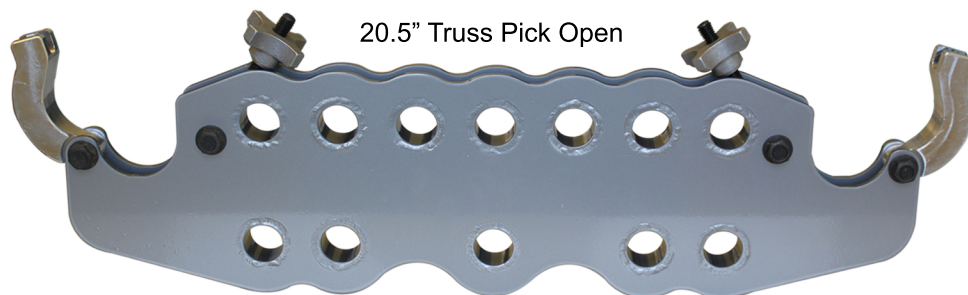
- 1" thick x 6.02" (height) x 22.10" (width)

### Safe Vertical Working Load:

- 1 ton truss / 2 ton total



20.5" Truss Pick Closed



20.5" Truss Pick Open